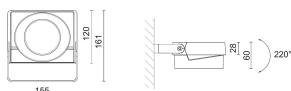
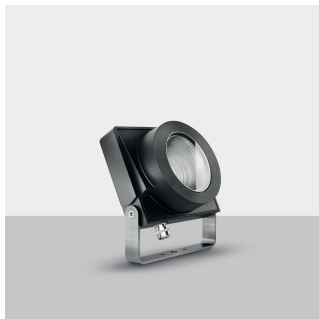


11430230 - Lito 230 12W

3000K CRI85 30°

Design: Enrico Davide Bona & Elisa Nobile



1,1 Kg



IP 66



Product Code	Color
11430230	Black

General specifications

Product type	Outdoor spotlight
Mounting location	Ground/Wall
Indoor/Outdoor light	Outdoor
Description	Exterior projector characterized by thin and shallow lines. It can be mounted on the wall or in the ground through the proper thermoplastic spike. IP66, high resistant and UV protected clear thermoplastic screen.
Product notes	Bracket in stainless steel.
Applications	Terraces , Residential outdoor areas , Gardens , Façades

Lighting specifications

i Stated L.O.R. and delivered lumens values are related to standard beam angle versions

Lamp description	LED 1760lm 12W 3000K CRI85
Nominal lumens on thermal regime (lm)	1760
LOR	89
Delivered lumen (lm)	1567
Watt source (W)	12
Color temperature (K)	3000
CRI	CRI 85
Lamp type	COB LED
Average lamp life (h)	L80B10 50.000

Physical specifications

Body	Die-cast aluminium
Finishing	Polyester painted
Optic device	Polycarbonate
Gasket	Silicone

Electrical specifications

Driver availability	Included
Driver mounting	Integrated
Voltage (V)	220/240
Frequency (Hz)	50/60

Optical specifications

Light distribution	Symmetric
Emission	Direct
Orientation	220° tilting.
Aiming	Tilttable
Light beam	30°

Weight and dimension

Length (mm)	60
Height (mm)	120
Width (mm)	155
Weight (Kg)	1.2

Power tolerance $\pm 5\%$ - Luminous flux tolerance $\pm 5\%$ - Measurement uncertainty $\pm 10\%$ - Ta: 25°C

Accessories



Product Code	28-3140-51
Name	Professional optic device S (Including diffuser)
Light beam	12°
Finishing	Mirror metallized



Product Code	28-3138-51
Name	Professional optic device W
Light beam	55°
Finishing	Mirror metallized



Product Code	28-3141-31
Name	Professional optic device XW
Light beam	70°
Finishing	White



Product Code	28-4019-30
Name	Honeycomb
Finishing	Black painted



Product Code	84108
Name	IP 68 rated cable connector
IP rating	IP 68

Power tolerance $\pm 5\%$ - Luminous flux tolerance $\pm 5\%$ - Measurement uncertainty $\pm 10\%$ - Ta: 25°C